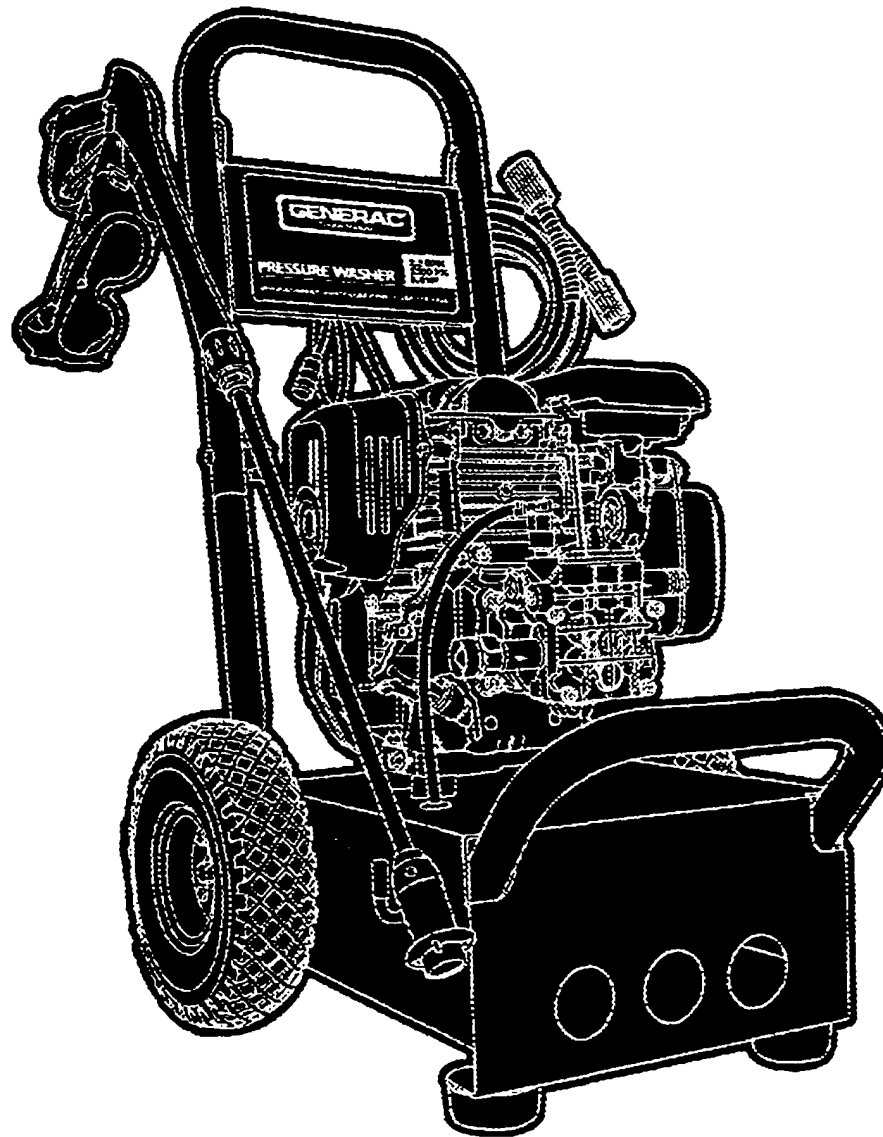


Parts Manual

Mfg. No: 1550-0
2,300 PSI



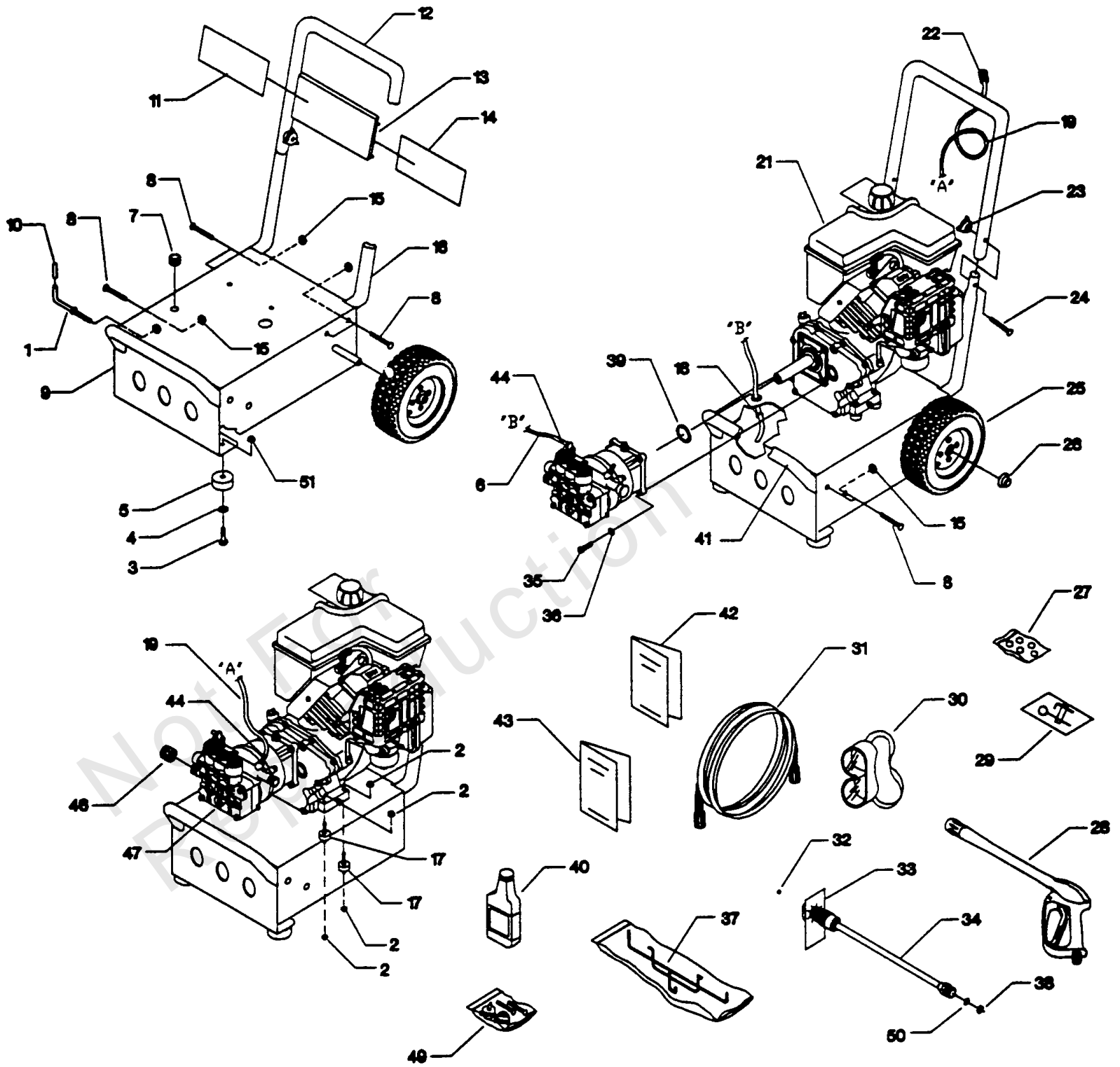
Model Components	Page
Pressure Washer 2300 PSI At 2.2 GPM.....	4
SAE, Horizontal EG Pump With Thermal Relief.....	6
Torque Specification Chart.....	10

Not For
Reproduction

Pressure Washer 2300 PSI At 2.2 GPM

Note: Unless noted otherwise, use the standard torque specifications

Mfg. No: 1550-0



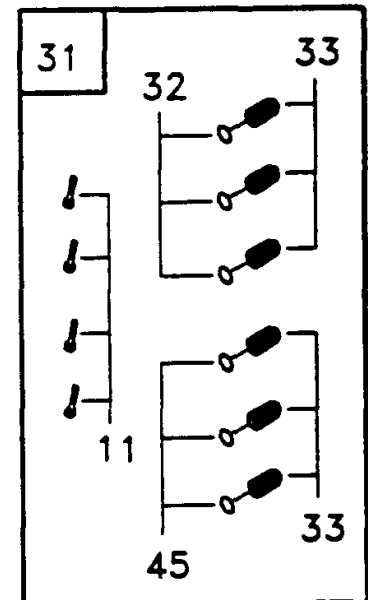
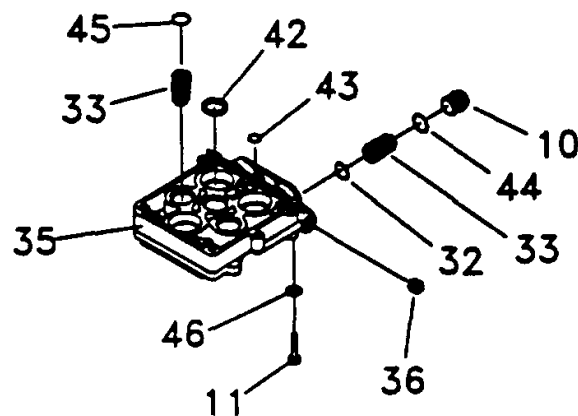
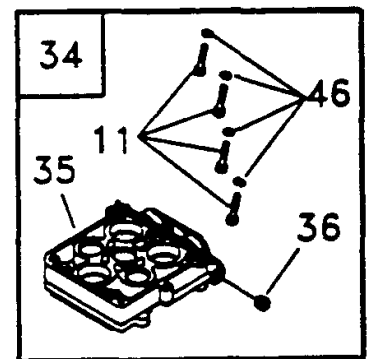
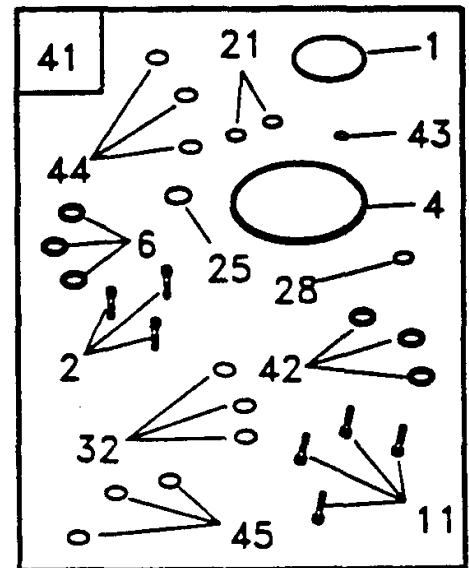
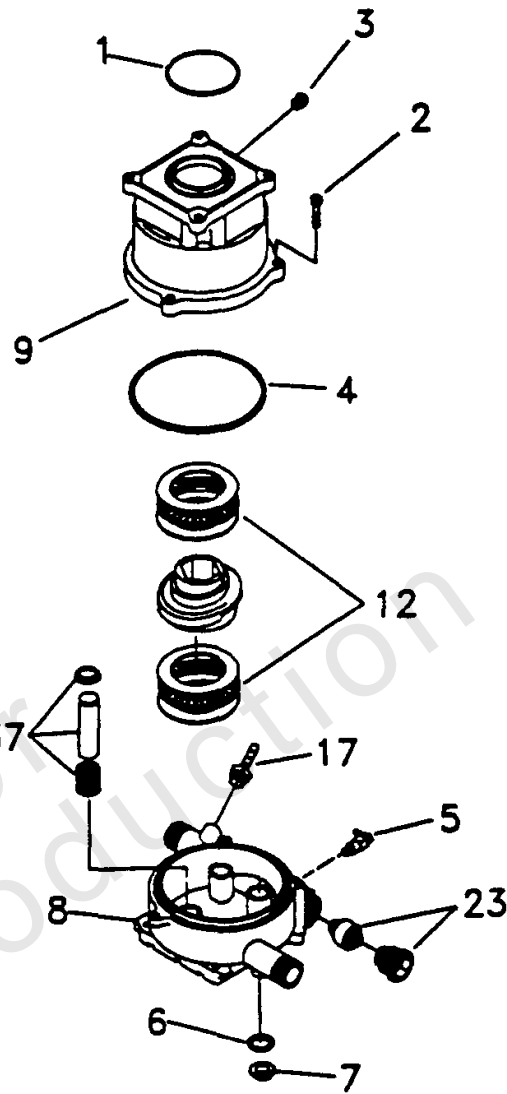
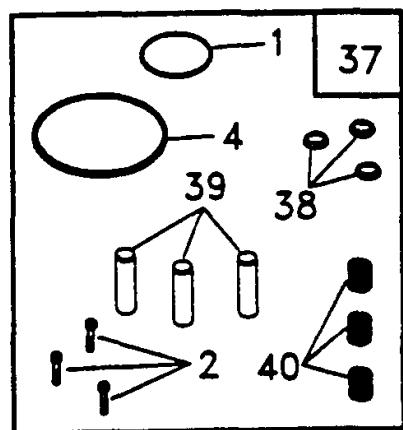
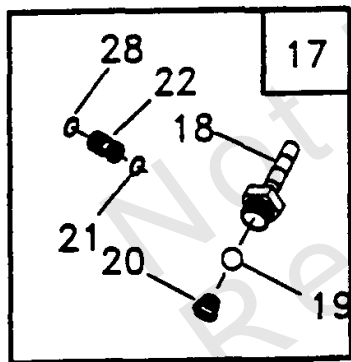
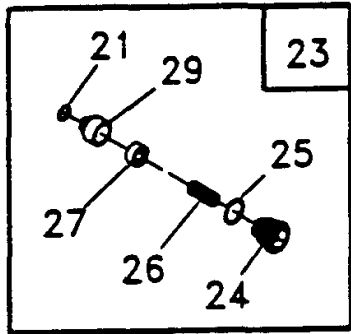
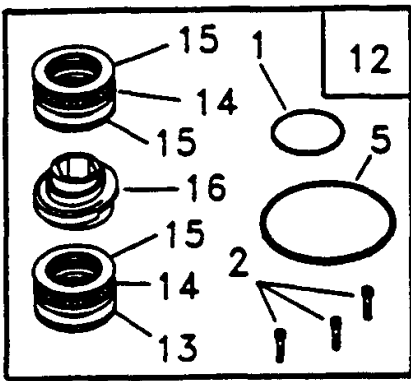
Pressure Washer 2300 PSI At 2.2 GPM

REF NO	PART NO	QTY	DESCRIPTION
1	B2150	1	HOOK Gun
2	67989	8	NUT, M8 Flange Serr.
3	42909	2	HHCS, M8 - 1.25 x 30
4	50190	2	WASHER, M8 Flat
5	27007	2	MOUNT, Donut Type Vibration
6	B3107	1	HOSE, Thermal Drain
7	30809	1	GROMMET, Rubber
8	B2043	7	BOLT, 5/16"-18 x 1-3/4" Carriage
9	BB5721B	1	BASE
10	B2516	1	CAP, Vinyl (black)
11	187857	1	DECAL Logo
12	B1983	1	HANDLE
13	B1631A	1	BILLBOARD, Plastic
14	B2796	1	DECAL, Instructions, Start
15	99583	9	NUT, Range Lock 5/16"-18
16	B1981	2	SUPPORT, Handle
17	21217	4	MOUNT, Rubber Shock
18	48031B	2	CLAMP, Hose Band
19	A1040D	1	HOSE, 4-1/2' Chemical Clear
21	187869	1	ENGINE
22	A1041	1	FILTER, Chemical Hose
23	97178	2	KNOB, Handle 1/4" - 20 PW
24	31669	2	BOLT, 1/4" - 20 x 1-3/4" Carriage
25	B4966	2	TIRE, 10"
26	75402C	2	PUSHNUT, 5/8" Dia.
27	B5830	1	Kit, "O" Ring
28	B3263	1	GUN, High Pressure
29	188287	1	KIT, Nozzle Cleaning
30	87815	1	GOGGLES, Safety
31	B5642	1	HOSE, High Pressure
32	21761	1	NOZZLE, 1.05 Yellow Replacement
33	97566	1	TAG, Nozzle Instructions
34	B3335	1	LANCE, Nozzle Hi/Lo
35	23707	4	SHCS, 5/16" - 24 x 1"
36	92479	4	WASHER, M8 Conical Ribbed
37	B2168A	1	WIREFORM, Hose, Gun, Jug
38	97837	1	O RING, Hi Pressure Transfer
39	B2218	1	O-RING, 1.625" I.D.
40	BB3061B	1	OIL
41	B1982	1	BUMPER
42	B5060	1	MANUAL, Engine
43	187849	1	MANUAL
44	48031G	2	CLAMP, Hose Band
46	21424	1	CONNECTOR, Garden Hose
47	-----	1	ASSEMBLY, Pump -(For Replacement, order 198347GS)
47	198347GS	1	REPLACEMENT PUMP ASSEMBLY
49	B2203	1	KIT, Handle Fastening
50	B4224	1	SCREEN, Gun Inlet
51	52858	2	NUT, Locking M8 - 1.25

SAE, Horizontal EG Pump With Thermal Relief

Note: Unless noted otherwise, use the standard torque specifications

Mfg. No: 1550-0



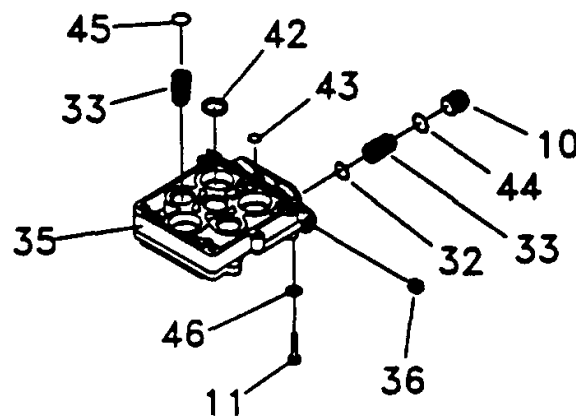
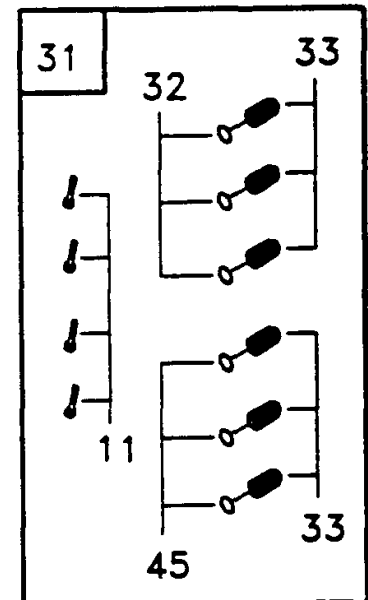
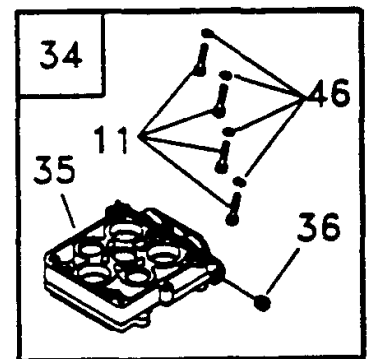
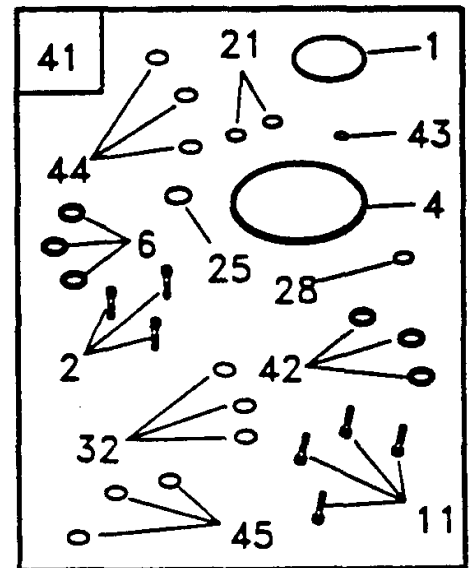
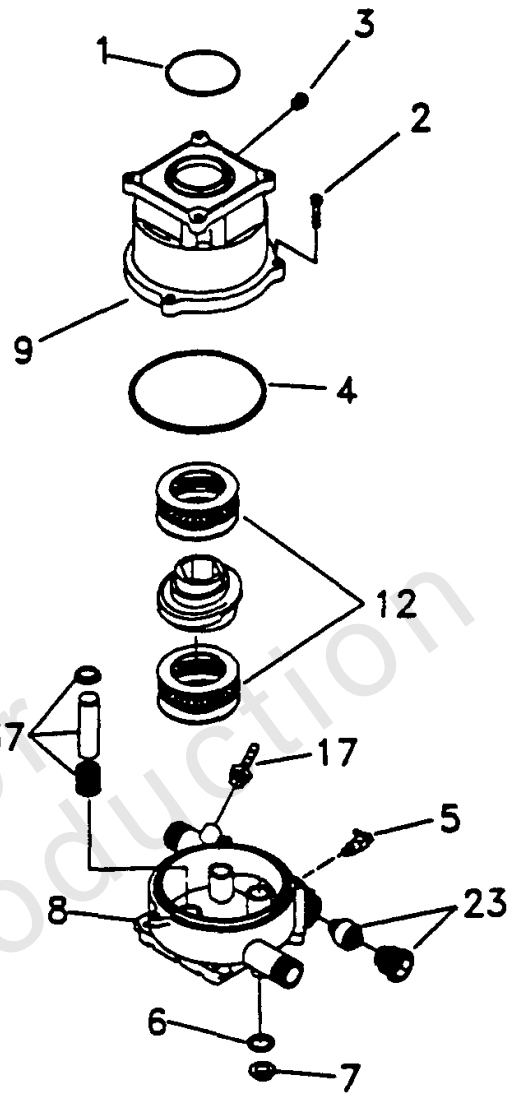
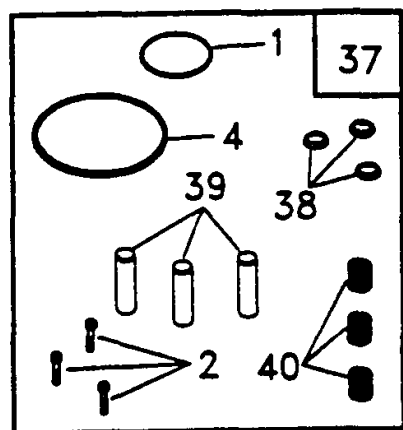
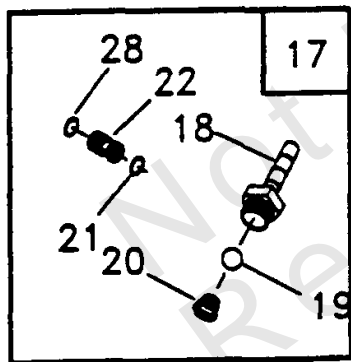
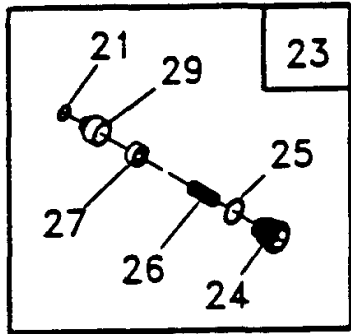
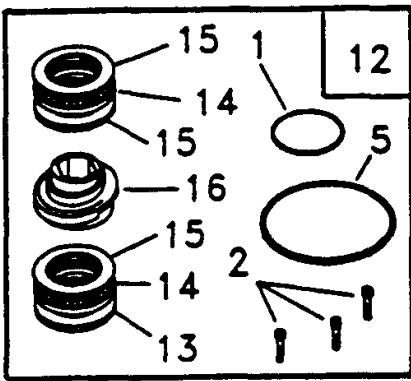
SAE, Horizontal EG Pump With Thermal Relief

REF NO	PART NO	QTY	DESCRIPTION
1	B2218	1	O-RING, 1.625 10 x .103
2	97962	3	SHCS, M6 - 1 x 25
3	B5710	1	VALVE, 1/8 npt 1-5 PSI
4	97835	1	O-RING, Housing Seal
5	21783	1	VALVE, Thermal Relief
6	93680	3	SEAL, Oil Piston
7	97831	3	SPACER, Pilot
8	B2702	1	HOUSING, Piston
9	B4813	1	ADAPTER, Engine
10	97841	3	CAP, Outlet Check Valve
11	40946	4	SHCS, M6-1.0 x 35
12	185715	0	KIT, AXIAL CAM -Service kit includes all parts shown within the box.
1	-----	1	O-RING, Engine Seal
2	-----	3	SHCS, M6 - 1 x 25
4	-----	1	O-RING, Housing Seal
13	-----	1	WASHER, Brg. 36 x 65 x 6 Thk
14	-----	2	ASSY, Brg. Cage 45 x 65
15	-----	3	WASHER, Brg. 45 x 65 x 1
16	-----	1	CAM, Axial 5.6 3/4" SAE
17	185287	0	KIT, CHEM INJECT -Service kit includes all parts shown within the box.
18	-----	1	FITTING, Chem Inject
19	-----	1	BALL, Chem Inject
20	-----	1	SPRING, Chem Inject
21	-----	1	O-RING, Venturi & Seat, Black
22	-----	1	VENTURI, Chem Inject
28	-----	1	O-RING, Venturi, Yellow
23	187879	0	KIT, UNLOADER -Service kit includes all parts shown within the box.
21	-----	1	O-RING, Venturi & Seat, Black
24	-----	1	CAP, Unloader
25	-----	1	O-RING, Unloader Cap
26	-----	1	SPRING, Unloader
27	-----	1	PISTON ASSY., Unloader
29	-----	1	SEAT, Unloader
31	185712	0	KIT, CHECK VALVES -Service kit includes all parts shown within the box.
11	-----	4	SHCS, M6-1.0 x 35
32	-----	3	O-RING, Check Valve
33	-----	6	ASSY, Check Valve
45	-----	3	O-RING, Check Valve, White
34	185531	0	KIT, HEAD BRASS EG -Service kit includes all parts shown within the box.
11	-----	4	SHCS, M6-1.0 x 35
35	-----	1	HEAD, Pump
36	-----	1	PLUG, 1/8-28
46	-----	4	WASHER, M6 Flat
37	185713	0	KIT, PISTON & SPRING -Service kit includes all parts shown within the box.
1	-----	1	O-RING, Engine Seal
2	-----	3	SHCS, M6 - 1 x 25
4	-----	1	O-RING, Housing Seal

SAE, Horizontal EG Pump With Thermal Relief

Note: Unless noted otherwise, use the standard torque specifications

Mfg. No: 1550-0



SAE, Horizontal EG Pump With Thermal Relief

REF NO	PART NO	QTY	DESCRIPTION
38	-----	3	RETAINER, Piston Spring
39	-----	3	PISTON, Dia. 15 x 65 Lg
40	-----	3	SPRING, Piston Return
41	185714	0	KIT, O-RING/SEAL 2300 -Service kit includes all parts shown within the box.
1	-----	1	O-RING, Engine Seal
2	-----	3	SHCS, M6 - 1 x 25
4	-----	1	O-RING, Housing Seal
6	-----	3	SEAL, Oil Piston
11	-----	4	SHCS, M6-1.0 x 35
21	-----	2	O-RING, Venturi & Seat, Black
25	-----	1	O-RING, Unloader Cap
28	-----	1	O-RING, Venturi, Yellow
32	-----	3	O-RING, Check Valve
42	-----	3	SEAL, Double-Lip
43	-----	1	O-RING, High Pressure Transfer
44	-----	3	O-RING, Outlet CV Cap
45	-----	3	O-RING, Check Valve, White

Hardware Identification & Torque Specifications

Torque Specification Chart								
FOR STANDARD METRIC MACHINE HARDWARE (Tolerance ± 20%)								
Property Class	5.6		8.8		10.9		12.9	
	Class 5.6		Class 8.8		Class 10.9		Class 12.9	
Size Of Hardware	in/lbs	Nm.	in/lbs	Nm.	in/lbs	Nm.	in/lbs	Nm.
	ft/lbs		ft/lbs		ft/lbs		ft/lbs	
M3	5.88	.56	13.44	1.28	19.2	1.80	22.92	2.15
M4	13.44	1.28	30.72	2.90	43.44	4.10	52.56	4.95
M5	26.4	2.50	60.96	5.75	5.97	8.10	7.15	9.7
M6	44.64	4.3	7.3	9.9	10.3	14	12.1	16.5
M7	5.2	7.1	12.1	16.5	16.9	23	19.9	27
M8	7.7	10.5	17.7	24	25	34	29	40
M10	15	21	35	48	50	67	59	81
M12	26	36	61	83	86.2	117	103	140
M14	42	58	101	132	136	185	162	220
M16	64	88	147	200	210	285	250	340
M18	89	121	202	275	287	390	346	470
M20	126	171	290	390	405	550	486	660
M22	169	230	390	530	559	745	656	890
M24	217	295	497	375	708	960	840	1140
M27	320	435	733	995	1032	1400	1239	1680
M30	435	590	995	1350	1401	1900	1681	2280
M33	590	800	1349	1830	1902	2580	2278	3090
M36	759	1030	1740	2360	2441	3310	2935	3980
M39	988	1340	2249	3050	3163	4290	3798	5150

Torque Specification Chart						
FOR STANDARD MACHINE HARDWARE (Tolerance ± 20%)						
Hardware Grade	No Marks		SAE Grade 5		SAE Grade 8	
	SAE Grade 2		SAE Grade 5		SAE Grade 8	
Size Of Hardware	in/lbs	Nm.	in/lbs	Nm.	in/lbs	Nm.
	ft/lbs		ft/lbs		ft/lbs	
8-32	19	2.1	30	3.4	41	4.6
8-36	20	2.3	31	3.5	43	4.9
10-24	27	3.1	43	4.9	60	6.8
10-32	31	3.5	49	5.5	68	7.7
1/4-20	66	7.6	8	10.9	12	16.3
1/4-28	76	8.6	10	13.6	14	19.0
5/16-18	11	15.0	17	23.1	25	34.0
5/16-24	12	16.3	19	25.8	29	34.0
3/8-16	20	27.2	30	40.8	45	61.2
3/8-24	23	31.3	35	47.6	50	68.0
7/16-14	30	40.8	50	68.0	70	95.2
7/16-20	35	47.6	55	74.8	80	108.8
1/2-13	50	68.0	75	102.0	110	149.6
1/2-20	55	74.8	90	122.4	120	163.2
9/16-12	65	88.4	110	149.6	150	204.0
9/16-18	75	102.0	120	163.2	170	231.2
5/8-11	90	122.4	150	204.0	220	299.2
5/8-18	100	136	180	244.8	240	326.4
3/4-10	160	217.6	260	353.6	386	525.0
3/4-16	180	244.8	300	408.0	420	571.2
7/8-9	140	190.4	400	544.0	600	816.0
7/8-14	155	210.8	440	598.4	660	897.6
1-8	220	299.2	580	788.8	900	1,244.0
1-12	240	326.4	640	870.4	1,000	1,360.0

The guides and ruler furnished below are designed to help you select the appropriate hardware.



Nut, M8

Thread Diameter (mm)

Inside Diameter (in) Threads per inch

Nut, 1/2-16



Screw, M8- 1.25 x 25

Thread Diameter (mm) Distance between threads (mm) Body Length (mm)

Body Diameter Threads per inch Body Length (in)

Screw, 1/2- 16 x 2



Standard Hardware Sizing

When a washer or nut is identified as 1/2" (M8), this is the *Nominal size*, meaning the *inside diameter* is 1/2 inch (8mm metric thread diameter); if a second number is present it represents the *threads per inch* (distance between threads).

When bolt or capscrew is identified as 1/2 - 16 x 2" (M8 - 1.25 x 50), this means the *Nominal size*, or body diameter is 1/2 inch (8mm metric thread diameter), the second number, 16, represents the *threads per inch*, (*distance between threads*). The final number is the body length of the bolt or screw, 2 inches (50mm).

NOTES

- These torque values are to be used for all hardware excluding: locknuts, self-tapping screws, thread forming screws, sheet metal screws and socket head setscrews.
- Recommended seating torque values for locknuts:
 - for prevailing torque locknuts - use 65% of grade 5 torques.
 - for flange whizlock nuts and screws - use 135% of grade 5 torques.
- Unless otherwise noted on assembly drawings, all torque values must meet this specification.

Common Hardware Types

Hex Head Capscrew



Washer



Carriage Bolt



Hex Nut

Wrench & Fastener Size Guide

1/4" Bolt or Nut Wrench—7/16"	5/16" Bolt or Nut Wrench—1/2"	3/8" Bolt or Nut Wrench—9/16"	7/16" Bolt or Nut Wrench (Bolt)—5/8" Wrench (Nut)—11/16"	1/2" Bolt or Nut Wrench—3/4"
M6 Bolt or Nut Wrench—10mm	M8 Bolt or Nut Wrench—13mm	M10 Bolt or Nut Wrench—17mm	M12 Bolt or Nut Wrench—19mm	M14 Bolt or Nut Wrench—22mm

